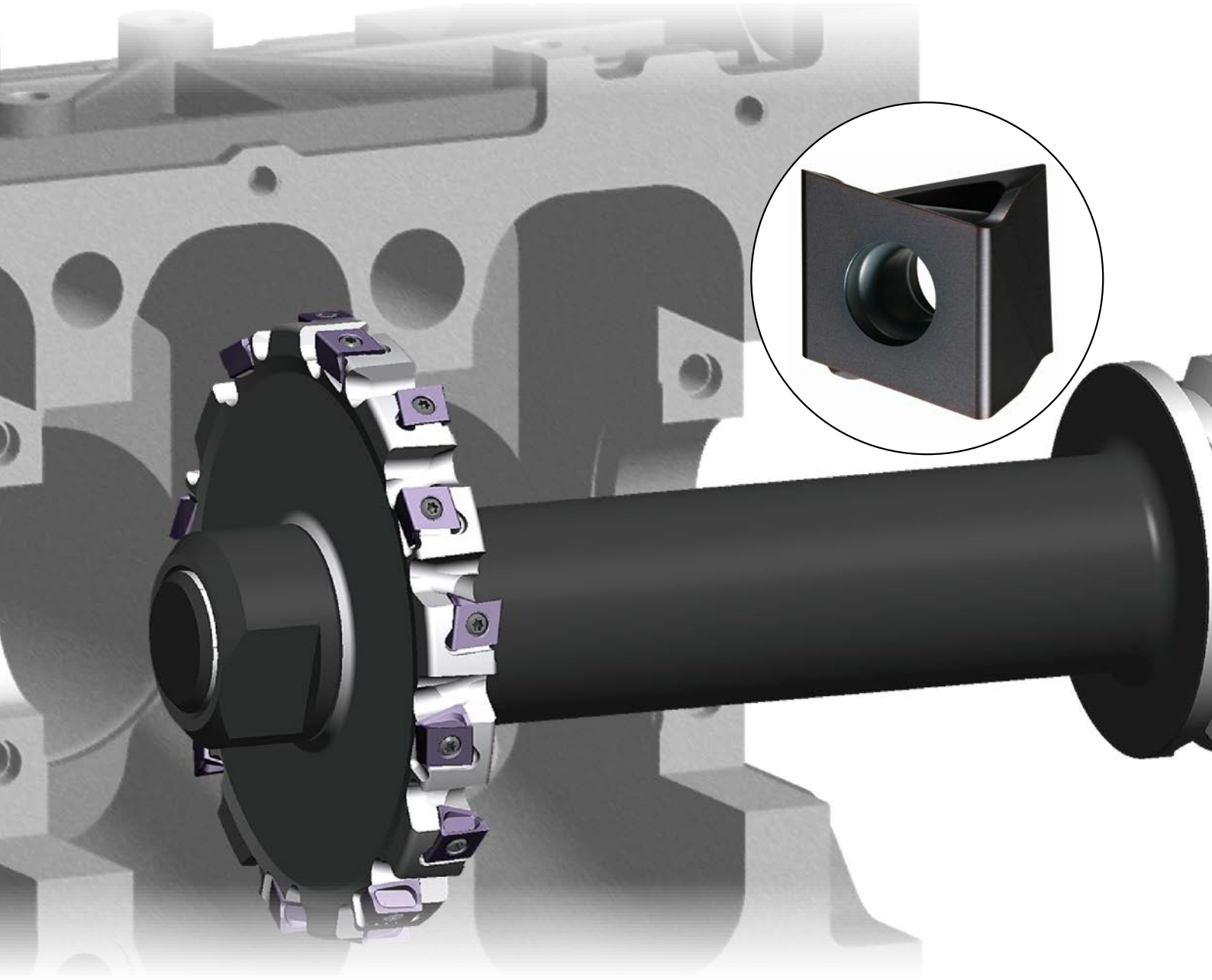

SÉRIE DE FRAISES DISQUES

SURFAÇAGE ET RAINURAGE À PLAQUETTES
TANGENTIELLES RÉVERSIBLES À FAIBLES EFFORTS
DE COUPE



*M*plus...

DCV3 / DCV4 / DCV5

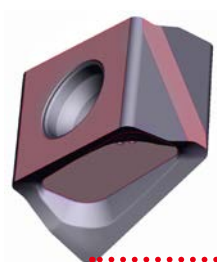
PLAQUETTES TRANGENTIELLES RÉVERSIBLES

CONCEPTION DE PLAQUETTE ÉCONOMIQUE

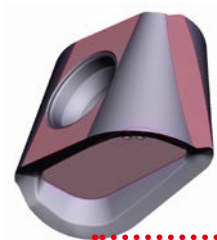
Plaquette tangentielle à 4 arêtes de coupe.

SERRAGE FIABLE

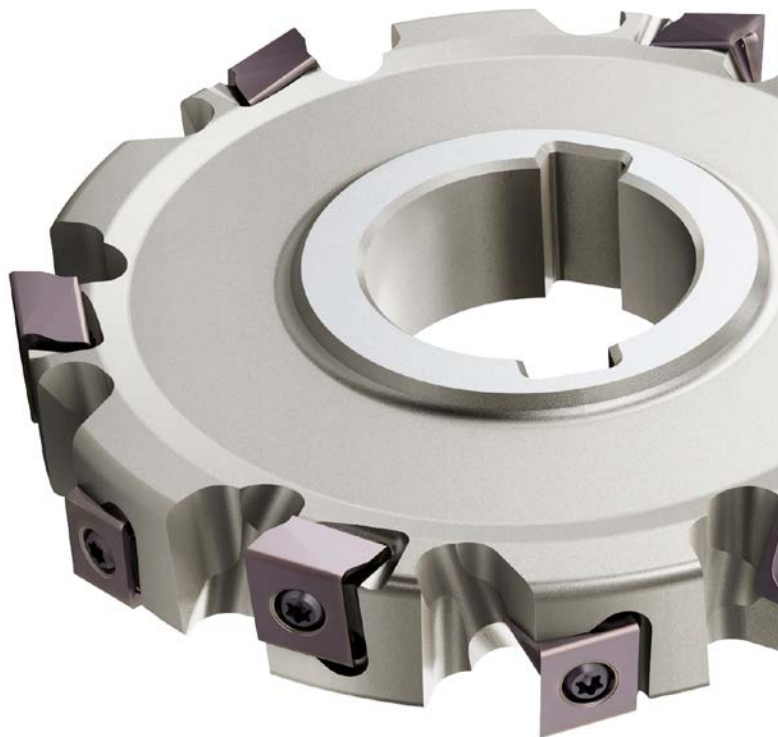
Les grandes surfaces d'appui assurent un serrage fiable des plaquettes, quelle que soit leur rayon.



Rayon de 0,4 mm

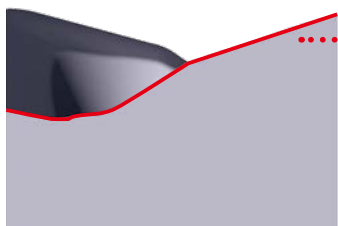


NEW Rayon de 4 mm pour DCV3
Rayon de 5 mm pour DCV4
Rayon de 7 mm pour DCV5

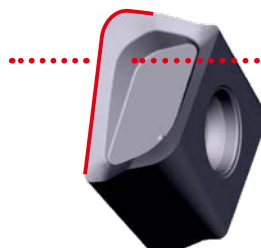


Géométrie de coupe : GAMF : +8°; GAMP : +3°

PLAQUETTE DE GRANDE ACUITÉ : EFFORTS DE COUPE RÉDUITS



Arête de coupe résistante
(courbure convexe)

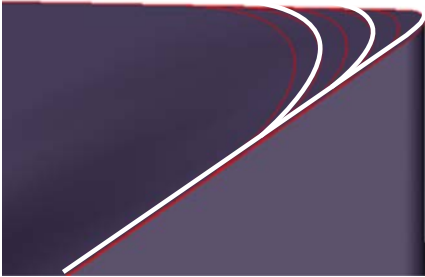


Face de coupe à double
angle

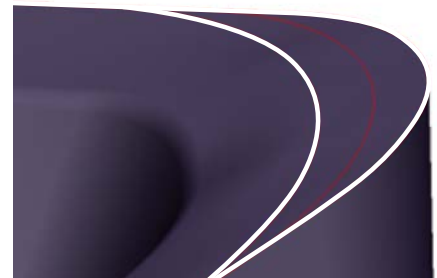
RAYON DE GRANDE PRÉCISION

PLAQUETTES DE PRÉCISION POUR USINER DES RAYONS EXACTS.

R 0.4 – R 3.0 mm

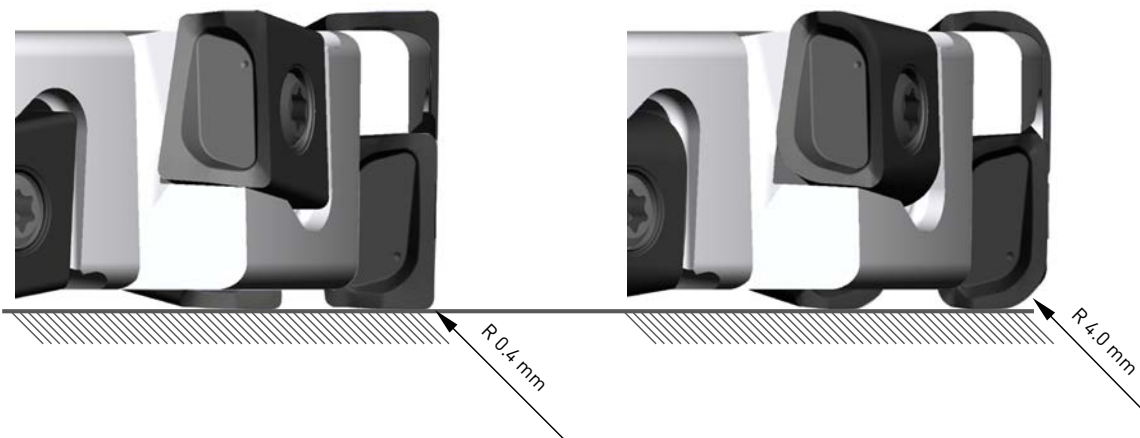


R 3.0 – R 7.0 mm



DIMENSIONS CONSTANTES

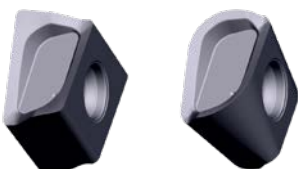
La largeur de coupe et le diamètre d'outil sont constants quel que soit le rayon de plaquette.



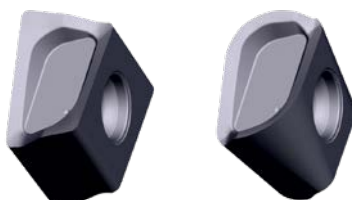
GRANDE GAMME DE RAYONS DISPONIBLES

NEW

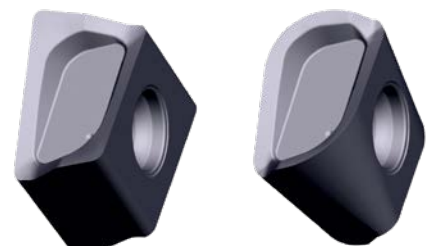
DCV3 = R 0.4 – R 4.0 mm



DCV4 = R 0.4 – R 5.0 mm

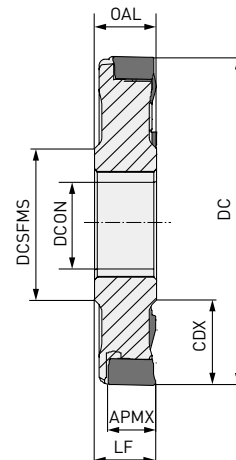
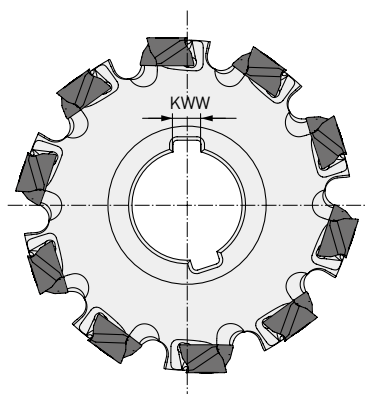


DCV5 = R 0.4 – R 7.0 mm




NEW

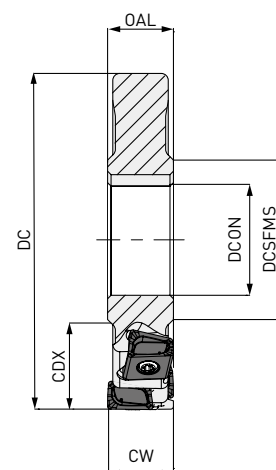
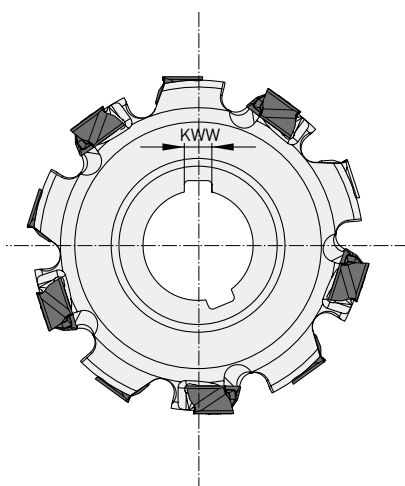
DCV3

**P** **K**

Max. APMX : 8.6 mm

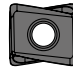
FRAISAGE UNE FACE, MONTAGE SUR ARBRE

DC	ZNF	LF = OAL	CDX	DCON	DCSFMS	KWW	
80 - 99.9	8		20.0	27	40	7	
100 - 124.9	10	≥12	27.0	32	46	8	LNGU09
125 - 160.0	12		35.0	40	55	10	

15 

Largeur de coupe max. CW : 17.2 mm

FRAISE À RAINURER, MONTAGE SUR ARBRE

DC	ZNF	ZNP	LF = OAL	CW	CDX	DCON	DCSFMS	KWW	
80 - 99.9	4	8		12-17.2	20.0	27	40	7	
100 - 124.9	5	10	≥12	12-17.2	27.0	32	46	8	LNGU09
125 - 160.0	6	12		12-17.2	35.0	40	55	10	

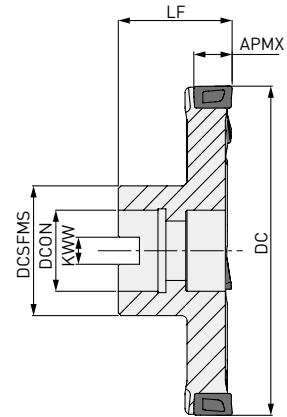
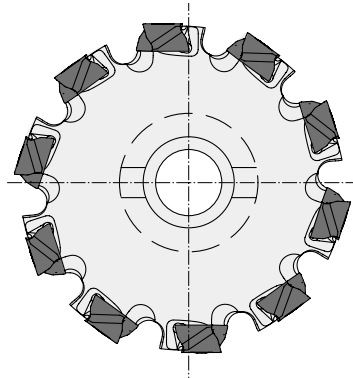
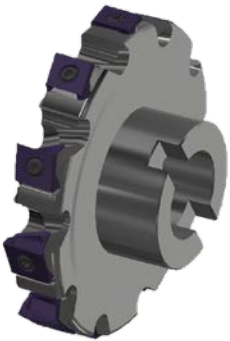
1. Des fraises avec plusieurs rangées de plaquettes sont réalisables. Concernant les géométries non représentées, veuillez contacter notre service technique européen (MMC Metal France – mmfsales@mmc-metal-france.fr)

15 

DCV3




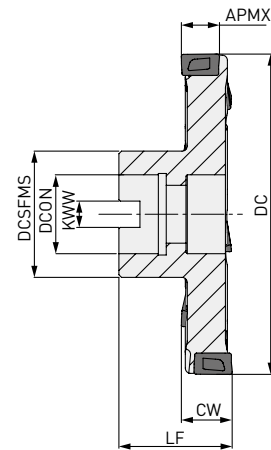
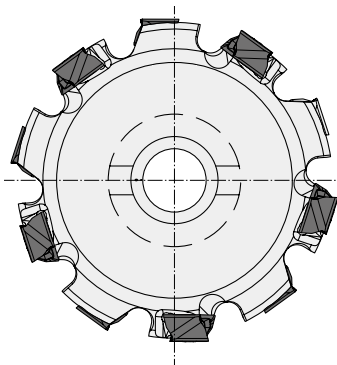
P K



Max. APMX : 8.6 mm


FRAISAGE UNE FACE, À MOYEU

DC	ZEFP	LF	CDX	DCON	DCSFMS	KWW	
80 - 99.9	8	50	20.0	27	40	12.4	LNGU09
100 - 124.9	10	60	27.0	32	46	14.4	
125 - 160.0	12	60	35.0	40	55	16.4	



Largueur de coupe max. CW : 17.2 mm

FRAISE À RAINURER, À MOYEU




DC	ZEFP	LF	CW	CDX	DCON	DCSFMS	KWW	
80 - 99.9	8	50	12-17.2	20.0	27	40	12.4	LNGU09
100 - 124.9	10	60	12-17.2	27.0	32	46	14.4	
125 - 160.0	12	60	12-17.2	35.0	40	55	16.4	

1. Des fraises avec plusieurs rangées de plaquettes sont réalisables. Concernant les géométries non représentées, veuillez contacter notre service technique européen (MMC Metal France – mmfsales@mmc-metal-france.fr)


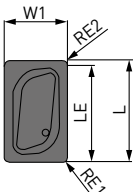
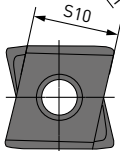
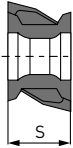


DCV3

PIÈCES DÉTACHÉES

Type de corps		TQ (Nm)		
	Vis de serrage	Couple de serrage	Clé	Lubrifiant antigrippant
DCV3 LNGU090600PNEOM	TS304	1.5	TKY08W	MK1KS

PLAQUETTES

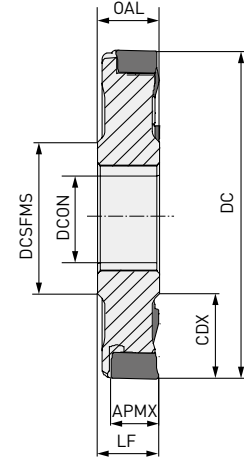
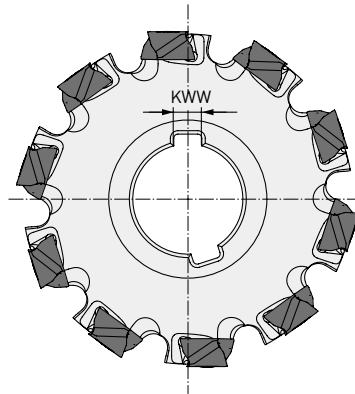
Référence	VP15TF	Sens	Classe	Honing	L	LE	S	S10	RE1	W1	Forme	Géométrie
NEW LNGU090604PNER-M	●	R	G	E	9	8.6	6	8.5	0.4	6		
NEW LNGU090608PNER-M	●	R	G	E	9	8.6	6	8.5	0.8	6		
NEW LNGU090612PNER-M	●	R	G	E	9	8.6	6	8.5	1.2	6		
NEW LNGU090616PNER-M	●	R	G	E	9	8.6	6	8.5	1.6	6		
NEW LNGU090620PNER-M	●	R	G	E	9	8.6	6	8.5	2	6		
NEW LNGU090624PNER-M	●	R	G	E	9	8.6	6	8.5	2.4	6		
NEW LNGU090630PNER-M	●	R	G	E	9	8.6	6	8.5	3	6		
NEW LNGU090640PNER-M	●	R	G	E	9	8.6	6	8.5	4	6		
NEW LNGU090604PNEL-M	●	L	G	E	9	8.6	6	8.5	0.4	6		
NEW LNGU090608PNEL-M	●	L	G	E	9	8.6	6	8.5	0.8	6		
NEW LNGU090612PNEL-M	●	L	G	E	9	8.6	6	8.5	1.2	6		
NEW LNGU090616PNEL-M	●	L	G	E	9	8.6	6	8.5	1.6	6		
NEW LNGU090620PNEL-M	●	L	G	E	9	8.6	6	8.5	2	6		
NEW LNGU090624PNEL-M	●	L	G	E	9	8.6	6	8.5	2.4	6		
NEW LNGU090630PNEL-M	●	L	G	E	9	8.6	6	8.5	3	6		
NEW LNGU090640PNEL-M	●	L	G	E	9	8.6	6	8.5	4	6		

(10 plaquettes par boîte)

DCV4




P K

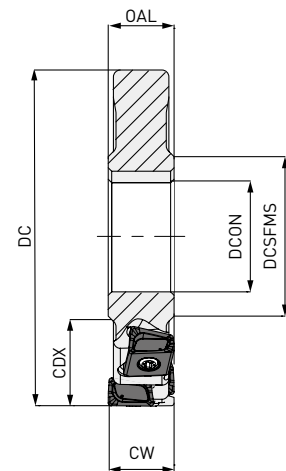
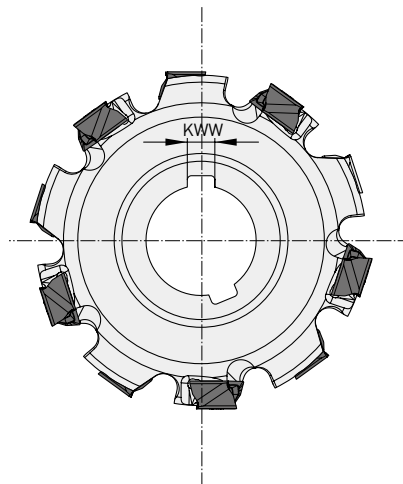


Max. APMX : RE1 < 3.0 mm 12.2 mm
RE1 > 3.0 mm 11.4 mm

FRAISAGE UNE FACE, MONTAGE SUR ARBRE


DC	ZEFP	LF = OAL	CDX	DCON	DCSFMS	KWW	
80 - 99.9	8	18	20.0	27	40	7	LNGU13
100 - 124.9	10		27.0	32	46	8	
125 - 159.9	12		35.0	40	55	10	
160 - 200	14		52.5	40	55	10	

15 



Largueur de coupe max. CW : 24 mm

FRAISE À RAINURER, MONTAGE SUR ARBRE

DC	ZEFP	CW	CDX	DCON	DCSFMS	KWW	
80 - 99.9	4	18-24	20.0	27	40	7	LNGU13
100 - 124.9	5	18-24	27.0	32	46	8	
125 - 159.9	6	18-24	35.0	40	55	10	
160 - 200	7	18-24	52.5	40	55	10	

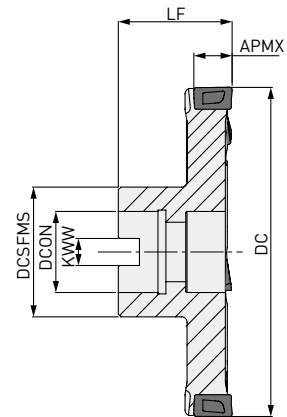
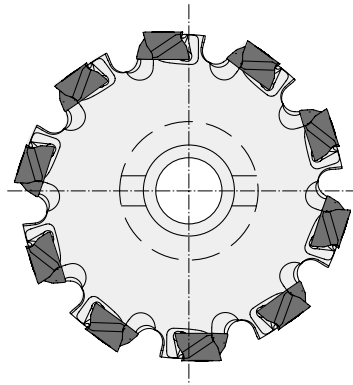
1. Des fraises avec plusieurs rangées de plaquettes sont réalisables. Concernant les géométries non représentées, veuillez contacter notre service technique européen (MMC Metal France - mmfsales@mmc-metal-france.fr)

15 

DCV4




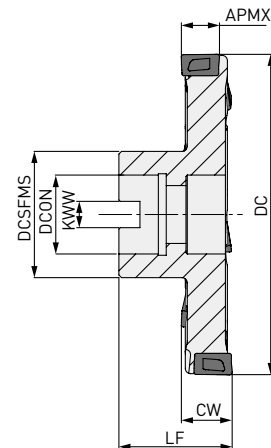
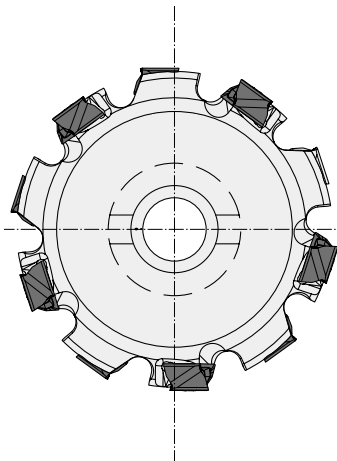
P K



Max. APMX : RE1 < 3.0 mm 12.2 mm
RE1 > 3.0 mm 11.4 mm

FRAISAGE UNE FACE, À MOYEU


DC	ZEFP	LF	CDX	DCON	DCSFMS	KWW	
80 - 99.9	8 - 10	50	20	27	40	12.4	LNGU13
100 - 124.9	10 - 12	60	27	32	46	14.4	
125 - 159.9	12 - 14	60	35	40	55	16.4	
160 - 200	14 - 20	70	52.5	40	55	16.4	



15 

Largeur de coupe max. CW : 24 mm

FRAISE À RAINURER, À MOYEU

DC	ZEFP	LF	CW	CDX	DCON	DCSFMS	KWW	
80 - 99.9	8 - 10	50	18-24	20	27	40	12.4	LNGU13
100 - 124.9	10 - 12	60	18-24	27	32	46	14.4	
125 - 159.9	12 - 14	60	18-24	35	40	55	16.4	
160 - 200	14 - 20	70	18-24	52.5	40	55	16.4	

1. Des fraises avec plusieurs rangées de plaquettes sont réalisables. Concernant les géométries non représentées, veuillez contacter notre service technique européen (MMC Metal France - mmfsales@mmc-metal-france.fr)

15 

DCV4

PIÈCES DÉTACHÉES

Type de corps		TQ (Nm)		
	Vis de serrage	Couple de serrage	Clé	Lubrifiant antigrippant
DCV4 LNGU13080PNE00	TS406	3.5	TKY15T	MK1KS

PLAQUETTES

Référence	MP6120	VP15TF	Sens	Classe	Honing	L	LE	S	S10	RE1	RE2	W1	Forme	Géométrie
LNGU130804PNER-M	●		R	G	E	13.0	12.2	8.0	11.0	0.4	0.8	8.0		
LNGU130804PNEL-M	●		L	G	E	13.0	12.2	8.0	11.0	0.4	0.8	8.0		
LNGU130808PNER-M	●		R	G	E	13.0	12.2	8.0	11.0	0.8	0.8	8.0		
LNGU130808PNEL-M	●		L	G	E	13.0	12.2	8.0	11.0	0.8	0.8	8.0		
LNGU130812PNER-M	●		R	G	E	13.0	12.2	8.0	11.0	1.2	0.8	8.0		
LNGU130812PNEL-M	●		L	G	E	13.0	12.2	8.0	11.0	1.2	0.8	8.0		
LNGU130816PNER-M	●		R	G	E	13.0	12.2	8.0	11.0	1.6	0.8	8.0		
LNGU130816PNEL-M	●		L	G	E	13.0	12.2	8.0	11.0	1.6	0.8	8.0		
LNGU130820PNER-M	●		R	G	E	13.0	12.2	8.0	11.0	2.0	0.8	8.0		
LNGU130820PNEL-M	●		L	G	E	13.0	12.2	8.0	11.0	2.0	0.8	8.0		
LNGU130824PNER-M	●		R	G	E	13.0	12.2	8.0	11.0	2.4	0.8	8.0		
LNGU130824PNEL-M	●		L	G	E	13.0	12.2	8.0	11.0	2.4	0.8	8.0		
LNGU130830PNER-M	●		R	G	E	13.0	11.4	8.0	11.0	3.0	1.6	8.0		
LNGU130830PNEL-M	●		L	G	E	13.0	11.4	8.0	11.0	3.0	1.6	8.0		
LNGU130840PNER-M	●		R	G	E	13.0	11.4	8.0	11.0	4.0	1.6	8.0		
LNGU130840PNEL-M	●		L	G	E	13.0	11.4	8.0	11.0	4.0	1.6	8.0		
LNGU130850PNER-M	●		R	G	E	13.0	11.4	8.0	11.0	5.0	1.6	8.0		
LNGU130850PNEL-M	●		L	G	E	13.0	11.4	8.0	11.0	5.0	1.6	8.0		
LNGU130804PNER-R	●	●	R	G	E	13.0	12.2	8.0	11.0	0.4	0.8	8.0		
LNGU130804PNEL-R	●	●	L	G	E	13.0	12.2	8.0	11.0	0.4	0.8	8.0		
LNGU130808PNER-R	●	●	R	G	E	13.0	12.2	8.0	11.0	0.8	0.8	8.0		
LNGU130808PNEL-R	●	●	L	G	E	13.0	12.2	8.0	11.0	0.8	0.8	8.0		
LNGU130812PNER-R	●	●	R	G	E	13.0	12.2	8.0	11.0	1.2	0.8	8.0		
LNGU130812PNEL-R	●	●	L	G	E	13.0	12.2	8.0	11.0	1.2	0.8	8.0		
LNGU130816PNER-R	●	●	R	G	E	13.0	12.2	8.0	11.0	1.6	0.8	8.0		
LNGU130816PNEL-R	●	●	L	G	E	13.0	12.2	8.0	11.0	1.6	0.8	8.0		
LNGU130820PNER-R	●	●	R	G	E	13.0	12.2	8.0	11.0	2.0	0.8	8.0		
LNGU130820PNEL-R	●	●	L	G	E	13.0	12.2	8.0	11.0	2.0	0.8	8.0		
LNGU130824PNER-R	●	●	R	G	E	13.0	12.2	8.0	11.0	2.4	0.8	8.0		
LNGU130824PNEL-R	●	●	L	G	E	13.0	12.2	8.0	11.0	2.4	0.8	8.0		
LNGU130830PNER-R	●	●	R	G	E	13.0	11.4	8.0	11.0	3.0	1.6	8.0		
LNGU130830PNEL-R	●	●	L	G	E	13.0	11.4	8.0	11.0	3.0	1.6	8.0		
LNGU130840PNER-R	●	●	R	G	E	13.0	11.4	8.0	11.0	4.0	1.6	8.0		
LNGU130840PNEL-R	●	●	L	G	E	13.0	11.4	8.0	11.0	4.0	1.6	8.0		
LNGU130850PNER-R	●	●	R	G	E	13.0	11.4	8.0	11.0	5.0	1.6	8.0		
LNGU130850PNEL-R	●	●	L	G	E	13.0	11.4	8.0	11.0	5.0	1.6	8.0		

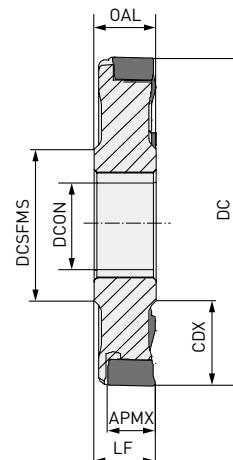
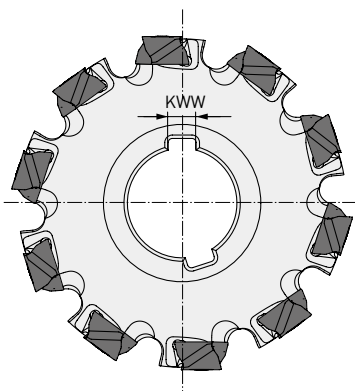
(10 plaquettes par boîte)

● : Article stocké. □ : Produit sur commande uniquement.

DCV5




P K

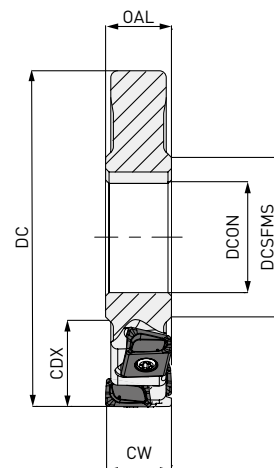
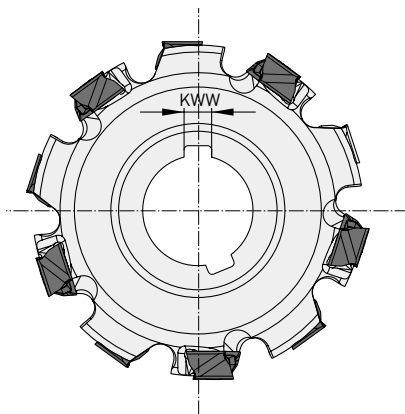


Max. APMX : RE1 < 3.0 mm 16.2 mm
RE1 > 3.0 mm 15.4 mm

FRAISAGE UNE FACE, MONTAGE SUR ARBRE


DC	ZEFP	LF = OAL	CDX	DCON	DCSFMS	KWW	
100 - 124.9	8	23	27.0	32	46	8	LNGU17
125 - 159.9	10		35.0	40	55	10	
160 - 199.9	12		52.5	40	55	10	
200 - 250	16		65.0	50	70	12	

15 



Largueur de coupe max. CW : 32 mm

FRAISE À RAINURER, MONTAGE SUR ARBRE

DC	ZEFP	CW	CDX	DCON	DCSFMS	KWW	
100 - 124.9	8	23-32	27.0	32	46	8	LNGU17
125 - 159.9	10		35.0	40	55	10	
160 - 199.9	12		52.5	40	55	10	
200 - 250	16		65.0	50	70	12	

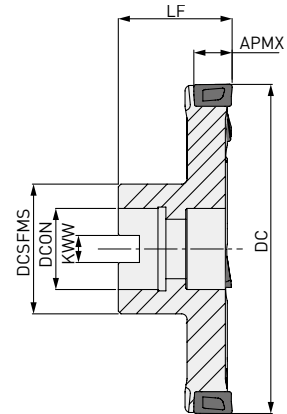
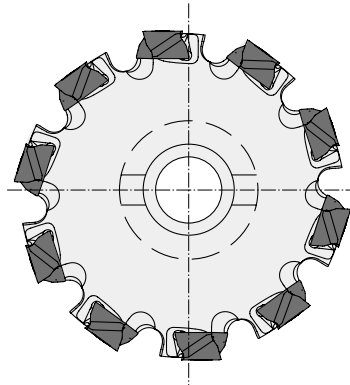
1. Des fraises avec plusieurs rangées de plaquettes sont réalisables. Concernant les géométries non représentées, veuillez contacter notre service technique européen (MMC Metal France - mmfsales@mmc-metal-france.fr)

15 

DCV5




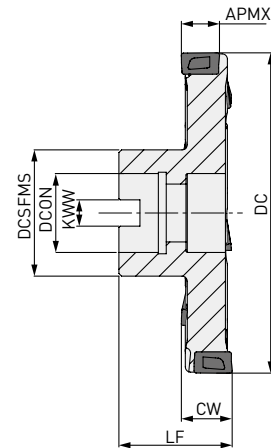
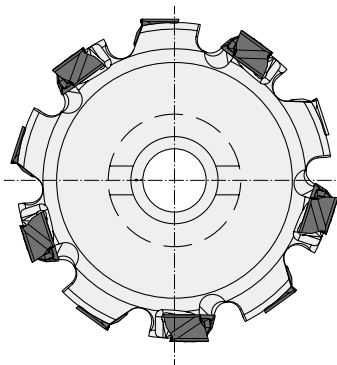
P K



Max. APMX : RE1 < 3.0 mm 16.2 mm
RE1 > 3.0 mm 15.4 mm


FRAISAGE UNE FACE, À MOYEU

DC	ZEFP	LF	CDX	DCON	DCSFMS	KWW	
100 - 124.9	8 - 10	50	27	32	46	14.4	LNGU17
125 - 159.9	10 - 12	60	35	40	55	16.4	
160 - 199.9	12 - 14	60	52.5	40	55	16.4	
200 - 250	14 - 20	70	65	40	70	16.4	



Largeur de coupe max. CW : 32 mm

FRAISE À RAINURER, À MOYEU




DC	ZEFP	LF	CW	CDX	DCON	DCSFMS	KWW	
100 - 124.9	8 - 10	60	23-32	27	32	46	14.4	LNGU17
125 - 159.9	10 - 12	60		35	40	55	16.4	
160 - 199.9	12 - 14	70		52.5	40	55	16.4	
200 - 250.0	14 - 20	70		65	40	70	16.4	

1. Des fraises avec plusieurs rangées de plaquettes sont réalisables. Concernant les géométries non représentées, veuillez contacter notre service technique européen (MMC Metal France - mmfsales@mmc-metal-france.fr)



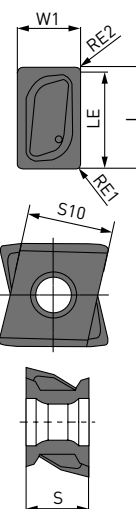
DCV5

PIÈCES DÉTACHÉES

Type de corps	 Vis de serrage	TQ (Nm)	 Clé	 Lubrifiant antigrippant
	TS53	Couple de serrage	TKY25T	MK1KS
DCV5 LNGU17100PNER	TS53	7.5	TKY25T	MK1KS

PLAQUETTES

Référence	MP6120	VP15TF	Sens	Classe	Honing	L	LE	S	S10	RE1	RE2	W1	D1	Forme	Géométrie
LNGU171004PNER-R	●	●	R	G	E	17.0	16.2	10.0	13.0	0.4	0.8	10.0	5.5		
LNGU171004PNEL-R	●	●	L	G	E	17.0	16.2	10.0	13.0	0.4	0.8	10.0	5.5		
LNGU171008PNER-R	●	●	R	G	E	17.0	16.2	10.0	13.0	0.8	0.8	10.0	5.5		
LNGU171008PNEL-R	●	●	L	G	E	17.0	16.2	10.0	13.0	0.8	0.8	10.0	5.5		
LNGU171012PNER-R	●	●	R	G	E	17.0	16.2	10.0	13.0	1.2	0.8	10.0	5.5		
LNGU171012PNEL-R	●	●	L	G	E	17.0	16.2	10.0	13.0	1.2	0.8	10.0	5.5		
LNGU171016PNER-R	●	●	R	G	E	17.0	16.2	10.0	13.0	1.6	0.8	10.0	5.5		
LNGU171016PNEL-R	●	●	L	G	E	17.0	16.2	10.0	13.0	1.6	0.8	10.0	5.5		
LNGU171020PNER-R	●	●	R	G	E	17.0	16.2	10.0	13.0	2.0	0.8	10.0	5.5		
LNGU171020PNEL-R	●	●	L	G	E	17.0	16.2	10.0	13.0	2.0	0.8	10.0	5.5		
LNGU171024PNER-R	●	●	R	G	E	17.0	16.2	10.0	13.0	2.4	0.8	10.0	5.5		
LNGU171024PNEL-R	●	●	L	G	E	17.0	16.2	10.0	13.0	2.4	0.8	10.0	5.5		
LNGU171030PNER-R	●	●	R	G	E	17.0	15.4	10.0	13.0	3.0	1.6	10.0	5.5		
LNGU171030PNEL-R	●	●	L	G	E	17.0	15.4	10.0	13.0	3.0	1.6	10.0	5.5		
LNGU171040PNER-R	●	●	R	G	E	17.0	15.4	10.0	13.0	4.0	1.6	10.0	5.5		
LNGU171040PNEL-R	●	●	L	G	E	17.0	15.4	10.0	13.0	4.0	1.6	10.0	5.5		
LNGU171050PNER-R	●	●	R	G	E	17.0	15.4	10.0	13.0	5.0	1.6	10.0	5.5		
LNGU171050PNEL-R	●	●	L	G	E	17.0	15.4	10.0	13.0	5.0	1.6	10.0	5.5		
LNGU171060PNER-R	●	●	R	G	E	17.0	15.4	10.0	13.0	6.0	1.6	10.0	5.5		
LNGU171060PNEL-R	●	●	L	G	E	17.0	15.4	10.0	13.0	6.0	1.6	10.0	5.5		
LNGU171070PNER-R	●	●	R	G	E	17.0	15.4	10.0	13.0	7.0	1.6	10.0	5.5		
LNGU171070PNEL-R	●	●	L	G	E	17.0	15.4	10.0	13.0	7.0	1.6	10.0	5.5		

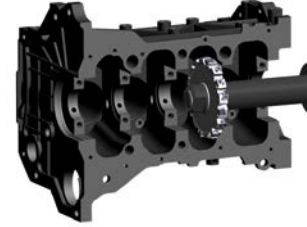


[10 plaquettes par boîte]

EXEMPLES D'APPLICATIONS

Outil	DCV4 Ø 300 mm	DCV4 Ø 160 mm
Plaquette (nuance)	LNGU130804PNER-M (VP15TF)	LNGU130804PNER-M (VP15TF)
	Chape de frein à disque (FGS400-3)	Carter moteur (Ft 25)

Pièce



n (tr/min)	120	500
Vc (m/min)	113	201
fz (mm)	0.09-0.24	0.14
Vf (mm/min)	150-400	500
ap (mm)	1.0-2.0	1.0
Lubrification	Usinage à sec	Usinage à sec
Machine	Centre d'usinage	Centre d'usinage horizontal

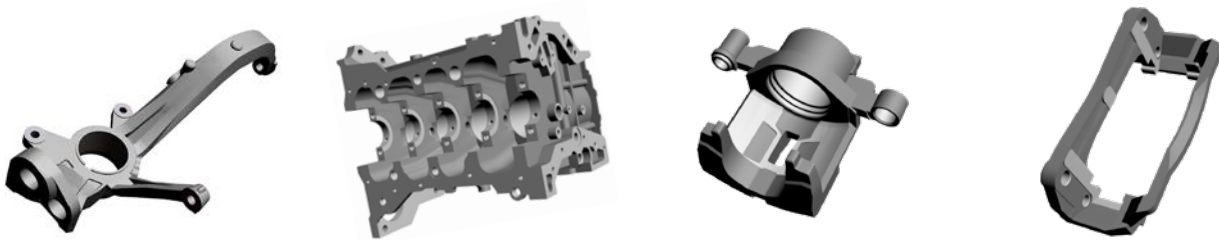
Résultats

Durée de vie de l'outil environ deux fois supérieure aux produits conventionnels. Précision dimensionnelle et état de surface excellents. La fraise DCV a permis d'obtenir une réduction de 30% des coûts d'outils.

Productivité 1,5 fois supérieure aux produits conventionnels. Durée de vie de l'outil quasiment doublée. Coupe stable, bruit faible et bon état de surface. Productivité améliorée et durée de vie augmentée.

1. Les exemples d'application ci-dessus sont tirés d'applications réelles et peuvent différer des conditions de coupe recommandées.

FRAISES DISQUES DE CONCEPTION UNIQUE



La technologie de pointe pour usiner les aciers et les fontes.

SPÉCIFICATIONS

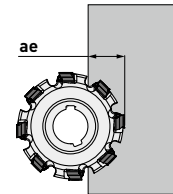
	DCV3	DCV4	DCV5
Matières	P K	P K	P K
Faibles efforts de coupe	◎	◎	◎
Robustesse	◎	◎	◎
Type de plaquette		Tangentielle réversible	Tangentielle réversible
ZNF		2	2
ZNP	4	4	4
Fraisage une face	RE ≤ 4.0 mm 8.6 mm	RE ≤ 3.0 mm 12.2 mm	RE ≤ 3.0 mm 16.2 mm
Profondeur de passe max. APMX	RE ≥ 3.0mm 11.4 mm	RE ≥ 3.0mm 11.4 mm	RE ≥ 3.0 mm 15.4 mm
Fraise à rainurer DC max.	Ø 300 mm	Ø 400 mm	Ø 660 mm

DCV3 / DCV4 / DCV5

CONDITIONS DE COUPE

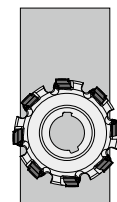
SURFAÇAGE-DRESSAGE

Matière	Dureté	Nuance	Vc	ap	ae	fz	Niveau d'interruption
P Acier doux	≤180HB	MP6120 VP15TF	150 (130-180)	≤APMX	<10%	0.10 (0.08-0.15)	
					<30%		
					≤50%		
				≤2.0	≤50%		
P Acier au carbone/allié	180-280HB	MP6120 VP15TF	150 (130-180)	≤2.0	<10%	0.10 (0.08-0.15)	
				≤4.0	<10%		
				≤4.0	≤50%		
				≤APMX	<10%		
K Fonte grise	Résistance à la traction ≤ 350MPa	VP15TF	150 (130-180)	≤APMX	<10%	0.10 (0.08-0.15)	
				≤2.0	≤50%		
				≤4.0	<10%		
				≤APMX	<10%		
K Fonte ductile	Résistance à la traction ≤ 450MPa	VP15TF	130 (110-160)	≤APMX	<10%	0.10 (0.08-0.15)	
				≤2.0	≤50%		
				≤4.0	<10%		
				≤APMX	<10%		
K Fonte ductile	Résistance à la traction ≤ 800MPa	VP15TF	130 (110-160)	≤APMX	<10%	0.10 (0.08-0.15)	
				≤2.0	≤50%		
				≤4.0	<10%		
				≤APMX	<10%		



SURFAÇAGE

Matière	Dureté	Nuance	Vc	ap	fz	Niveau d'interruption
P Acier doux	≤180HB	MP6120 VP15TF	150 (130-180)	≤APMX	0.10 (0.08-0.15)	
				≤2.0		
P Acier au carbone/allié	180-280HB	MP6120 VP15TF	150 (130-180)	≤4.0	0.10 (0.08-0.15)	
				≤APMX		
K Fonte grise	Résistance à la traction ≤ 350MPa	VP15TF	150 (130-180)	≤2.0	0.12 (0.08-0.20)	
				≤4.0		
K Fonte ductile	Résistance à la traction ≤ 450MPa	VP15TF	150 (130-180)	≤APMX	0.10 (0.08-0.12)	
				≤2.0		
K Fonte ductile	Résistance à la traction ≤ 800MPa	VP15TF	130 (110-160)	≤4.0	0.10 (0.08-0.15)	
				≤APMX		





GERMANY

MMC HARTMETALL GMBH
Comeniusstr. 2 . 40670 Meerbusch
Phone +49 2159 91890 . Fax +49 2159 918966
Email admin@mmchg.de

U.K.

MMC HARDMETAL U.K. LTD.
Mitsubishi House . Galena Close . Tamworth . Staffs. B77 4AS
Phone +44 1827 312312 . Fax +44 1827 312314
Email sales@mitsubishicarbide.co.uk

SPAIN

MITSUBISHI MATERIALS ESPAÑA, S.A.
Calle Emperador 2 . 46136 Museros/Valencia
Phone +34 96 1441711 . Fax +34 96 1443786
Email comercial@mmevalencia.es

FRANCE

MMC METAL FRANCE S.A.R.L.
6, Rue Jacques Monod . 91400 Orsay
Phone +33 1 69 35 53 53 . Fax +33 1 69 35 53 50
Email mmfsales@mmc-metal-france.fr

POLAND

MMC HARDMETAL POLAND SP. Z O.O
Al. Armii Krajowej 61 . 50-541 Wrocław
Phone +48 71335 1620 . Fax +48 71335 1621
Email sales@mitsubishicarbide.com.pl

RUSSIA

MMC HARDMETAL OOO LTD.
Electrozavodskaya St. 24 . build. 3 . Moscow . 107023
Phone +7 495 725 58 85 . Fax +7 495 981 39 79
Email info@mmc-carbide.ru

ITALY

MMC ITALIA S.R.L.
Viale Certosa 144 . 20156 Milano
Phone +39 0293 77031 . Fax +39 0293 589093
Email info@mmc-italia.it

TURKEY

MMC HARTMETALL GMBH ALMANYA - İZMİR MERKEZ ŞUBESİ
Adalet Mahallesi Anadolu Caddesi No: 41-1 . 15001 35530 Bayraklı /İzmir
Phone +90 232 5015000 . Fax +90 232 5015007
Email info@mmchg.com.tr

www.mitsubishicarbide.com | www.mmc-hardmetal.com


DISTRIBUÉ PAR:

┌

┐

└

┘

Code de référence: MP104F | 
Publication: 2022.04 (0), imprimé en Allemagne